

CERTIFICATE OF LOCATION OF GOVERNMENT CORNER

EAST QUARTER Corner of Section 8, Township 107, Range 42, 5TH P.M.

STATE OF MINNESOTA, County of MURRAY

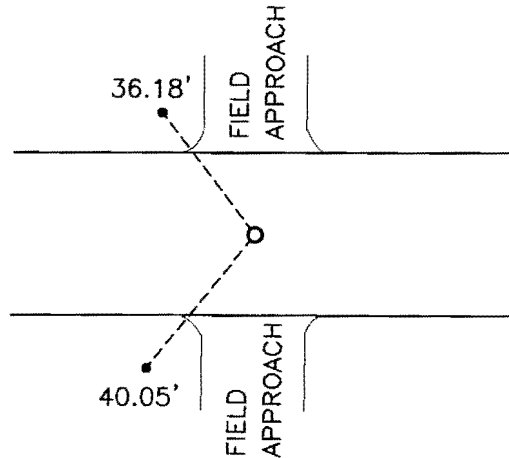
At the corner location shown on the sketch:

On 04-17-2008 found a 1/2" SMOOTH IRON
DATE

left monument as found, lowered monument, removed monument (explain)

On _____ placed a _____
DATE

SKETCH OF REFERENCE TIES




Minnesota State Plane Coordinate
System Murray County Datum
NAD83 (1996)

N: 187410.998
E: 463994.527

1/2" Rerod NW 36.18'
1/2" Rerod SW 40.05'

Statement of evidence relative to this corner location is on back of page.

I hereby certify that this document and the data contained herein was prepared by me or under my direct supervision.


SIGNATURE 10/15/08
DATE

Registration No. 43844

Land Surveyor, Professional Engineer
 County Surveyor, County Engineer

OFFICE OF THE COUNTY RECORDER

County of _____

I hereby certify that this document was filed in the Co. Recorders office at _____ .M on the _____ day of _____ A.D. 20 _____

County Recorder James V. Johnson
By OCT 22 2008, Deputy

DOCUMENT NO. _____

Statement of Evidence

In 1861, L. G. M. Fletcher, did the original subdivision of the township.

On October 21, 1927, the corner was recorded as a 8"x10"x16" stone.

The Murray County Highway Department recorded the corner as a concrete monument and tied it out.
(No date)

On April 20, 1989, The Murray County Highway Department found a pointed field stone and concrete monument and placed a $\frac{3}{8}$ "x16" bolt over the monument, and recorded new ties.

On April 17, 2008, Bueltel-Moseng Land Surveying found a $\frac{1}{2}$ " smooth iron. We were able to check to the Murray County Highway Department ties from April 20, 1989. We accepted the corner as found.